



Parc Norman Rochester Park

Booth Street Complex
Corner of Norman and Rochester Streets, Ottawa



Canada Lands Company
Société immobilière du Canada



Introduction



Canada Lands Company
Société immobilière du Canada

Introduction

- Canada Lands Company

Consulting Team:

- Ruhland & Associates Ltd. Landscape Architect
- JL Richards Civil Engineer
- McKee Mechanical Engineer
- IFS Urban Forester





Background



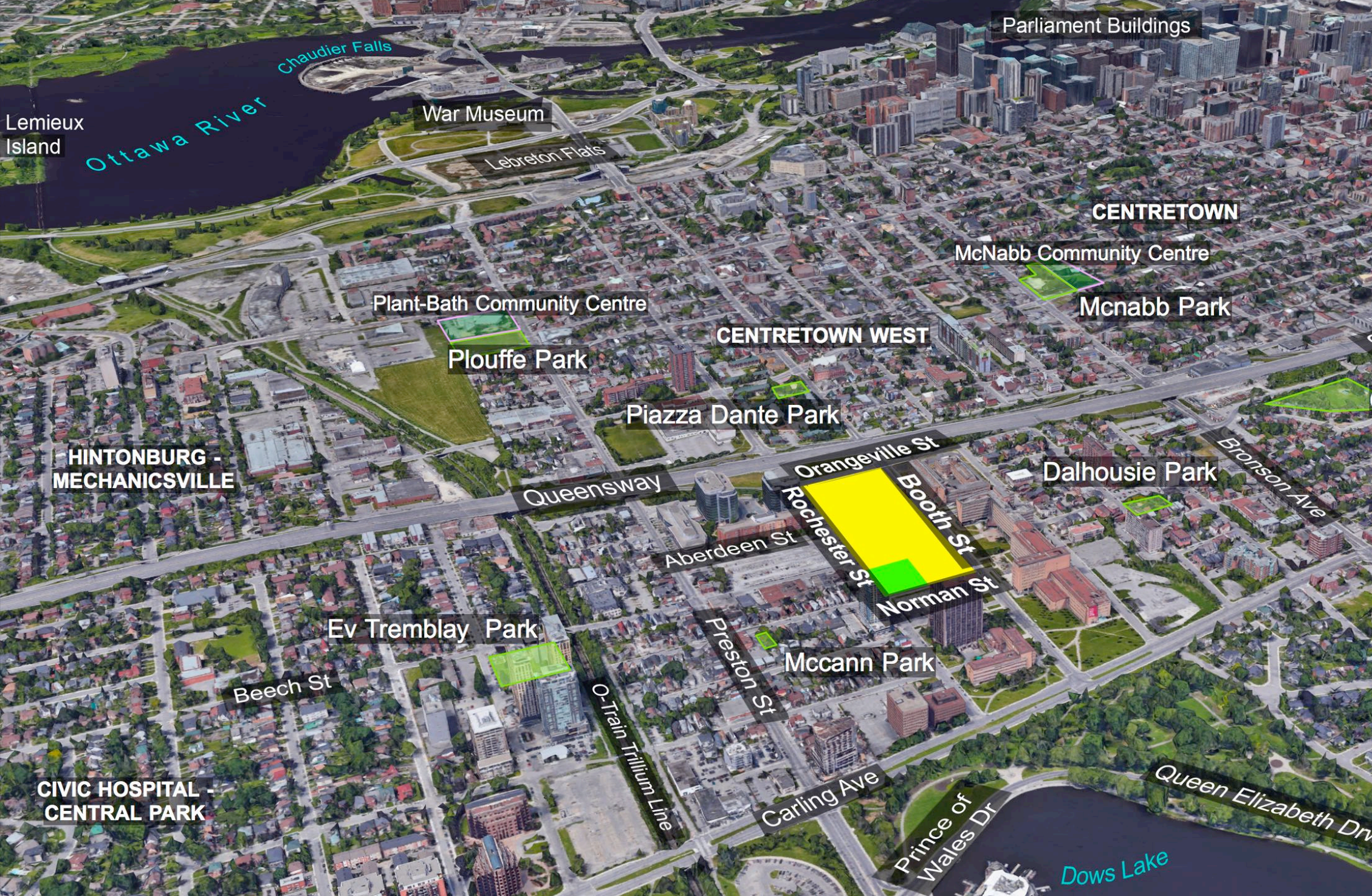
Canada Lands Company
Société immobilière du Canada



Park Introduction



Canada Lands Company
Société immobilière du Canada

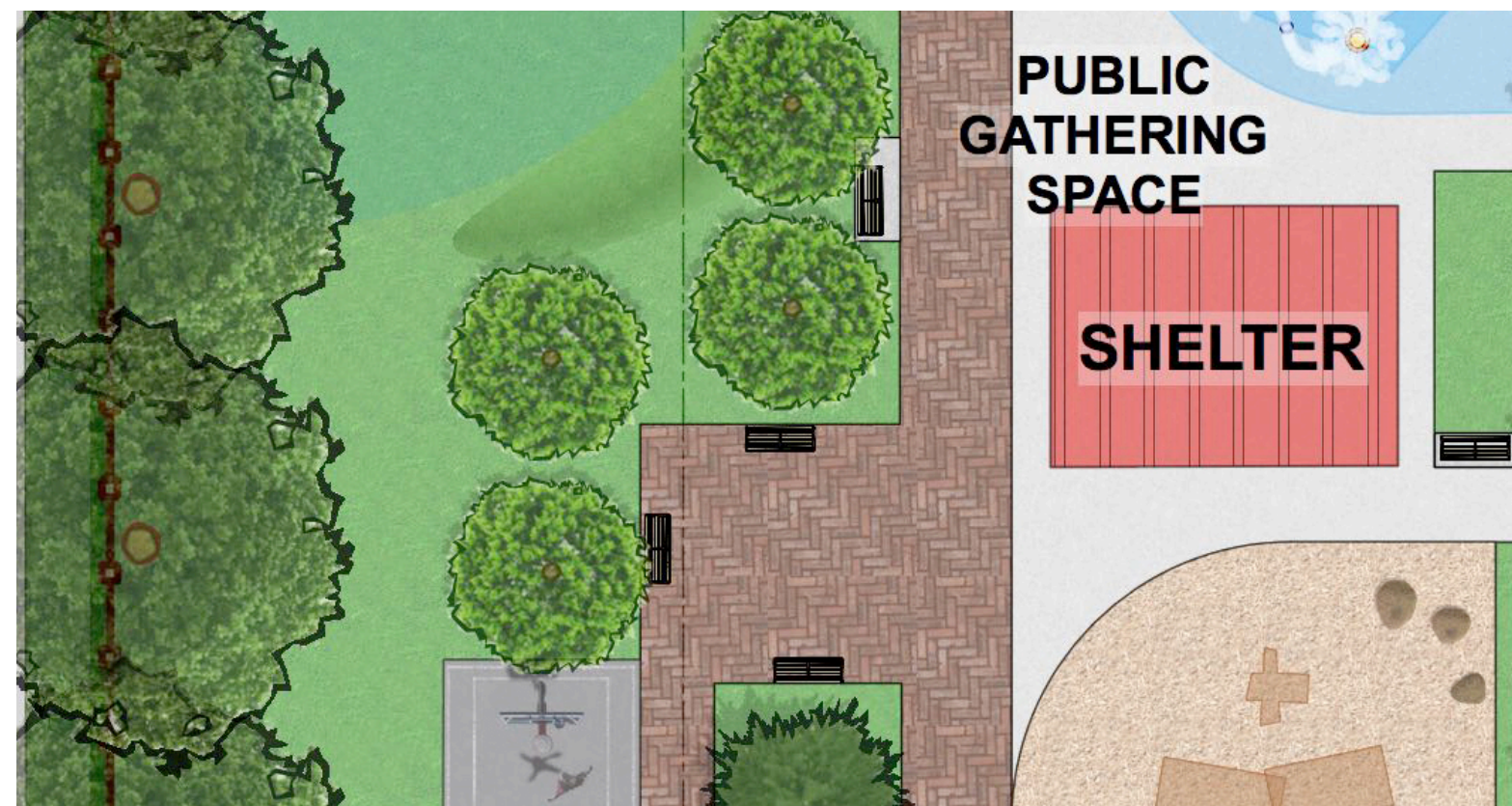


Contextual Plan





Park Concepts



Canada Lands Company
Société immobilière du Canada

PARK - UPDATED FACILITY FIT PLAN

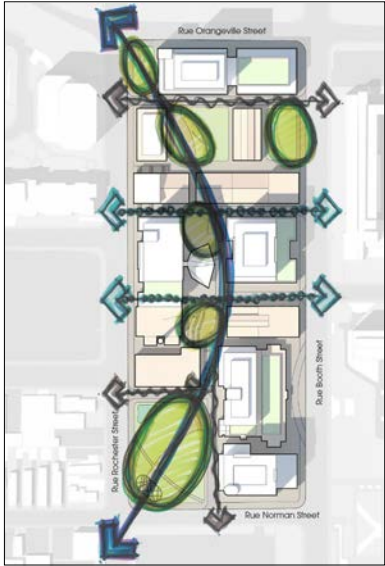


Preliminary layout

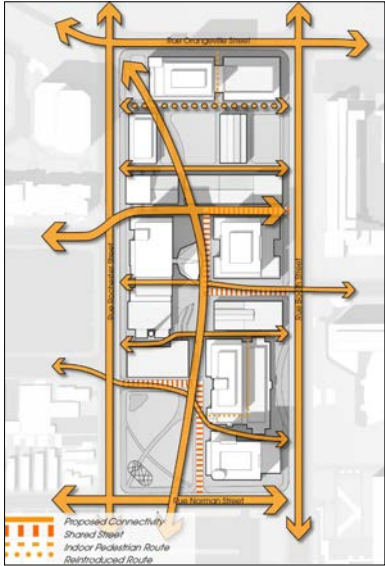
BOOTH STREET COMPLEX –
URBAN DESIGN GUIDELINE SCHEMATICS



Green infrastructure



Connective spine



Connectivity



Building heights



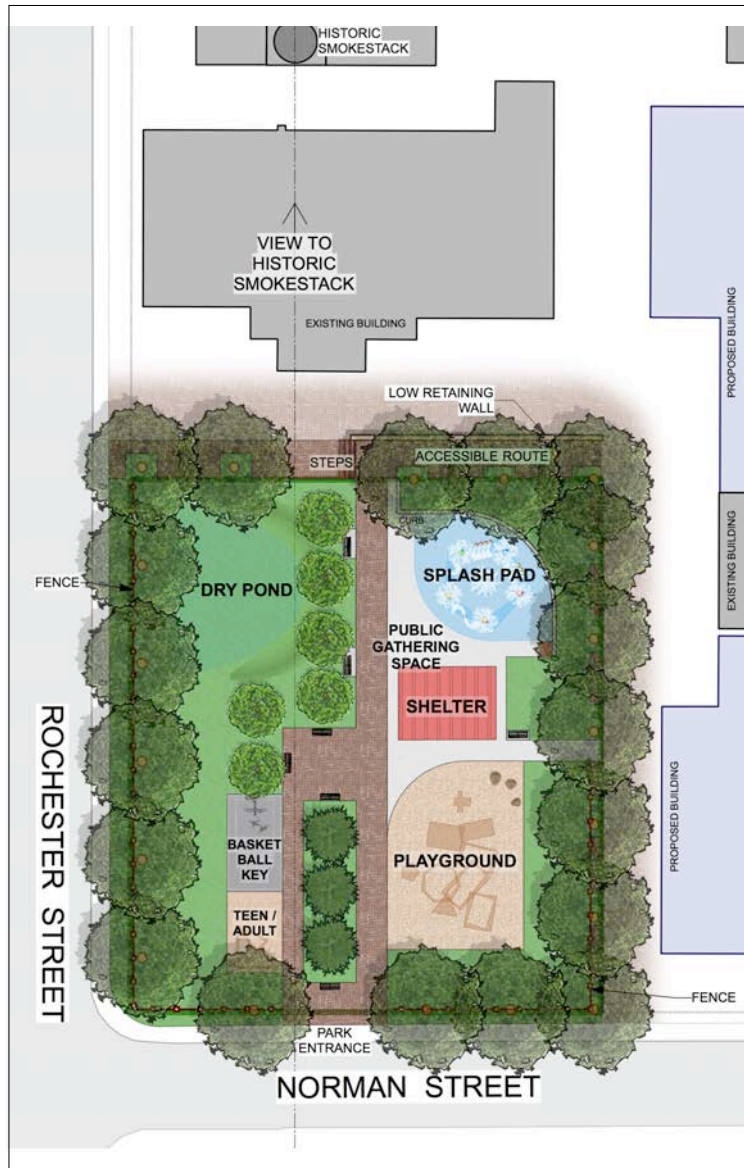
New development



Heritage conservation

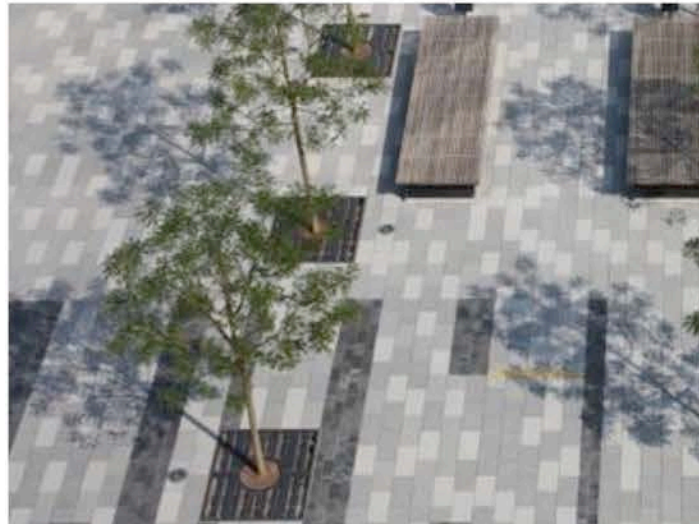


Park Concept – Final



Park amenities – Urban | Modern theme

Hardscape



Shade | Shelter



Park amenities – Urban | Modern theme

Furnishings | Fence



Splash Pad



Park amenities – Urban | Modern theme

Play Structures

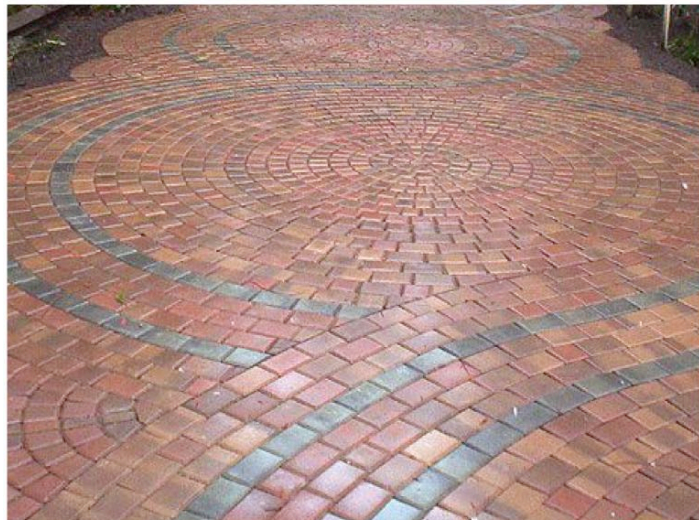
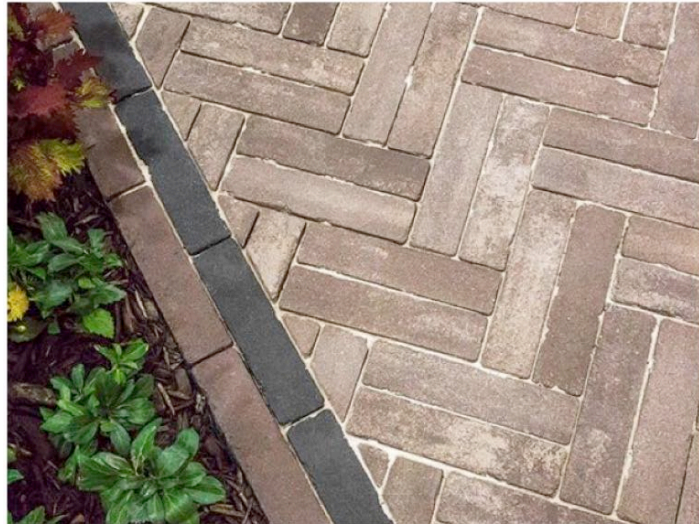


Basketball | Teen/Adult



Park amenities – Traditional theme

Hardscape

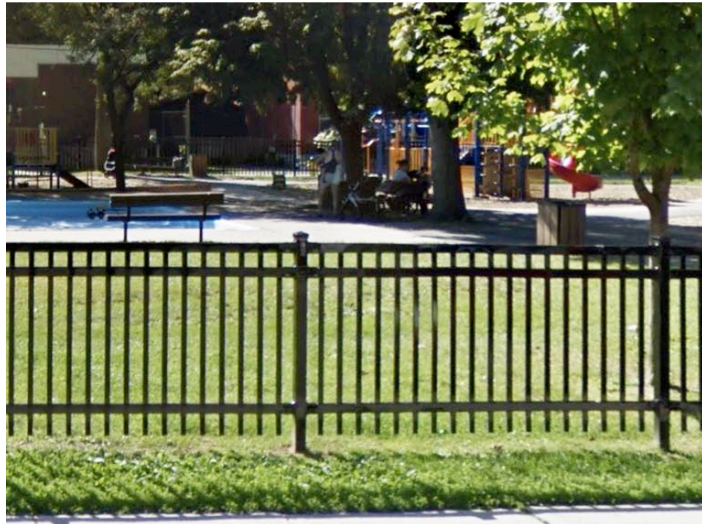


Shade | Shelter



Park amenities – Traditional theme

Furnishings | Fence



Splash Pad



Park amenities – Traditional theme

Play Structures



Basketball | Teen/Adult



Project Schedule



Canada Lands Company
Société immobilière du Canada

Project Schedule (Tentative)

- 2020 Spring / Summer:
 - Consultation
 - Design
- 2021 Spring:
 - Approvals
- 2021 Spring / Summer:
 - City Permits
 - Procure Contractor
- 2021 Summer:
 - Construction
- TBD:
 - Opening

